

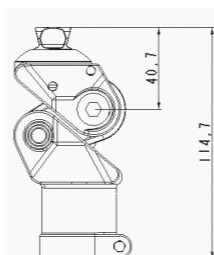


E-PRK101 MONOCENTRIC KNEE



- Monocentric knee joint
- Extra stance stability with adjustable knee tilting angle
- Ultra easy friction adjustment
- Smooth extension assistant adjustment
- Frame construction made of superlight aluminum alloy
- Light weight design

	Pyramid Adapter
Weight Limit	125 kg / 275 lbs
Build Height	114.7mm
KneeCenter to Top	40.7mm
Knee Flexion	145 degree
Product Weight	450g
Material	Aluminum
Warranty	2 years

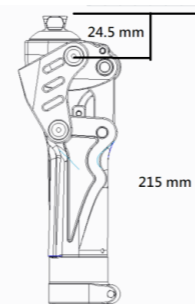


E-PRK432 4-BAR PNEUMATIC POLYCENTRIC KNEE



- Polycentric knee joint with pneumatic swing control
- Independent flexion/extension adjustment
- Knee cap design
- Main frame structure made of lightweight aluminum alloy
- Adjustable extension assist
- Light weight design
- Suitable for low K3 patients

	Pyramid Adapter
Weight Limit	125 kg / 275 lbs
Build Height	215 mm
Knee Center to Top	24.5 mm
Knee Flexion	150 degree
Product Weight	850 g
Material	Aluminum
Warranty	2 years



2018 PROSTHETICS



enable
life.

www.e-lifebracing.com

PRF01 CHOPART FOOT

The chopart footplate is specially designed for partial foot amputation. It is not only fulfilled visually requirements of the needs but also functionally. The carbon fiber technology provides energy storage and return during ambulation, and split toe design enables patients to walk on uneven ground situations. The footplate can be adhesively attached to the prosthetic socket.



SPECIFICATIONS

Product	Chopart foot
Activity level	K1-K2
Max. user weight	100 kg
Heel Height	10 mm
Side	Left & Right
Sizes	22-30 cm
System weight	70 g (size 24)
Foot shell sizes	22-30 cm
Connector type	Adhesive
Warranty	36 mo (6 mo for foot shell)

PRF02 PIONEER LP

The low profile design of PRF02, Pioneer LP, is also to fulfill requirements of daily activity and allow for light impact exercise such as fast walking and jogging. PRF02 is manufactured with aerospace-grade composite materials and techniques. Compare to traditional composite materials, aerospace grade composite materials possess benefits of higher strength, lighter weight, more flexible and durable etc.



Split toe design helps to adapt uneven ground condition improves comfortability, low profile design fits many of amputation conditions, and aerospace-grade materials provides light weight and high strength products.

SPECIFICATIONS

Product	Pioneer LP
Activity level	K1-K3
Max. user weight	100 kg
Heel Height	10 mm
Built height	50 mm (size 26)
Sizes	22-30 cm
System weight	290 g (size 26)
Foot shell sizes	22-30 cm
Connector type	Male Pyramid adaptor
Warranty	36 mo (6 mo for foot shell)

STIFFNESS CATEGORY SELECTION

Weight (kg)	Activity Level		
	Low	Medium	High
41-50	1	1	2
51-60	1	2	2
61-70	2	2	3
71-80	2	3	3
81-90	3	3	3
91-100	3	3	3

PRF03 PIONEER

The high profile design of PRF03 is not only fulfill requirements of daily activities, but also enable amputees to perform higher impact activities such as jogging, slow running and/or cycling etc.. PRF03 is manufactured with aerospace-grade composite materials and techniques. Compare to traditional composite materials, aerospace grade composite materials possess benefits of higher strength, lighter weight, more flexible and durable etc.

Split toe design helps to adapt uneven ground condition improves comfortability and aerospace-grade materials enables the foot light weight and more durable.

Compare to PRF02, PRF03 provides higher built height and higher energy storage and return capability, most smooth roll-over, and most natural gait pattern. The high built height design also efficiently reduces muscle fatigue and joint damage.



SPECIFICATIONS

Product	Pioneer
Activity level	K1-K3
Max. user weight	100 kg
Heel Height	10 mm
Built height	128 mm (size 25)
Sizes	22-30 cm
System weight	380 g (size 25)
Foot shell sizes	22-30 cm
Connector type	Male Pyramid adaptor
Warranty	36 mo (6 mo for foot shell)

STIFFNESS CATEGORY SELECTION

Weight (kg)	Activity Level		
	Low	Medium	High
41-50	1	1	2
51-60	1	2	2
61-70	2	2	3
71-80	2	3	3
81-90	3	3	3
91-100	3	3	3

CHOPART FOOT



PIONEER LP



PIONEER

